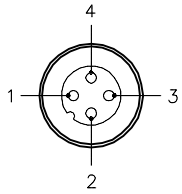


MALE END VIEW



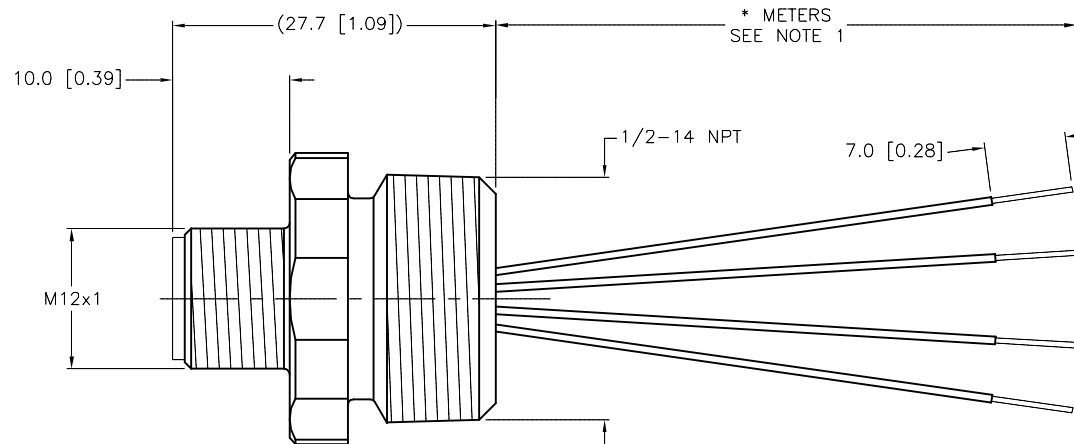
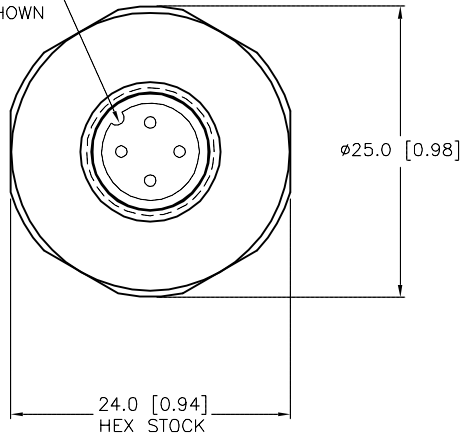
- 1 = BROWN
- 2 = WHITE
- 3 = BLUE
- 4 = BLACK



SPECIFICATIONS

|                                |                                   |
|--------------------------------|-----------------------------------|
| CONTACT CARRIER MATERIAL/COLOR | NYLON OR TPU/YELLOW               |
| CONTACT MATERIAL/PLATING       | BRASS/GOLD                        |
| RATED CURRENT [A]              | 4.0 A                             |
| RATED VOLTAGE [V]              | 250 V                             |
| HOUSING MATERIAL               | BRASS/NICKEL                      |
| CONDUCTOR INSULATION MATERIAL  | PVC                               |
| NUMBER OF CONDUCTORS [AWG]     | 4x22 AWG                          |
| TEMPERATURE RATING             | -40°C to +105°C (-40°F to +221°F) |
| PROTECTION CLASS               | MEETS NEMA 1,3,4,6P AND IEC IP68  |

KEYWAY ORIENTATION MAY VARY FROM WHAT IS SHOWN



| CABLE LENGTH | TOLERANCE*  |
|--------------|---|
| ALL LENGTHS  | + 4% (OR 50mm) OF LENGTH<br>- 0% (OR 0mm) OF LENGTH<br>WHICHEVER IS GREATER |
| STRIP LENGTH | TOLERANCE*  |
| 0-7mm        | ±0.5mm  |
| 8-29mm       | ±1.0mm  |
| 30-49mm      | ±2.0mm  |
| 50-69mm      | ±3.0mm  |
| 70-100mm     | ±4.0mm  |
| OVER 100mm   | ±5.0mm  |

\*UNLESS OTHERWISE SPECIFIED

SOURCE DRAWING - FOR REFERENCE ONLY

NOTES:

1. "\*" INDICATES LEAD LENGTH IN METERS. CONTACT TURCK TO ORDER SPECIFIC LENGTHS.

|   |   |  |                  |   |                                  |
|---|---|--|------------------|---|----------------------------------|
| RELATED DOCUMENTS<br>1.<br>2.<br>3.<br>4. | 3RD ANGLE PROJECTION<br>  | THIS DRAWING IS CONFIDENTIAL AND THE PROPERTY OF TURCK INC. USE OF THIS DOCUMENT WITHOUT WRITTEN PERMISSION IS PROHIBITED. |                  | 3000 CAMPUS DRIVE<br>MINNEAPOLIS, MN 55441<br>1-800-544-7769<br>(763) 553-7300<br>(763) 553-0708 fax<br>turck.com |                                  |
|   |   | MATERIAL<br>SEE SPECIFICATIONS   | DRFT RDS<br>DSGN | DATE 09/16/02<br>SCALE 1=.7   | DESCRIPTION<br>FS 4.4-*/14.5/NPT |
| FINISH<br>SEE SPECIFICATIONS              | ALL DIMENSIONS DISPLAYED ON THIS DRAWING ARE FOR REFERENCE ONLY<br>CONTACT TURCK FOR MORE INFORMATION | UNIT OF MEASUREMENT<br><b>MILLIMETER [ INCH ]</b>  |                  | IDENTIFICATION NO.  | REV<br>C                         |
| DO NOT SCALE THIS DRAWING                 |   | FILE: 777001256  |                  | SHEET 1 OF 1  |                                  |

|     |  |     |          |         |
|-----|--|-----|----------|---------|
| C   | DRAWING PROCESSED AS PART OF ECO 33971 | CBM | 04/06/11 | 33971   |
| REV | DESCRIPTION                            | BY  | DATE     | ECO NO. |